

UPPER PLAIN COUNCIL

- US Census Bureau Complete Count Committee (CCC) Training Workshop

June 13, 2019
10:00 am – 12:00 pm

121 W. Nash Street
Wilson, NC 27893



Forming 2020 Census Complete Count Committees



Atlanta Regional Office

Managing Census Operations in

AL, FL, GA, LA, MS, NC, SC

*The goal of Census 2020 is to
count everyone once,
only once and in the right
place.*

EVERYONE COUNTS!

The U.S. Constitution and Decennial Census

- Conducted every 10 years since **1790**, as required by the U.S. Constitution. Article I, Section 2. *"Representatives and direct Taxes shall be apportioned among the several States which may be included within this Union, according to their respective Numbers . . ."*
- The 1790 counted 3.9 million inhabitants.
- U.S. marshals conducted the enumerations between 1790 and 1870.
- Specially trained enumerators carried out the census beginning in 1880.



1910 Enumeration
A census enumerator interviews Winnebago Indians in Wisconsin in 1910.

Schedule of the whole number of Persons in the Territory of the United States North West of the Ohio.

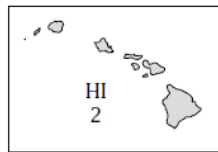
| Names of Counties | Free white Males | | | | | Free white Females | | | | | Slaves |
|---|-------------------------|--------------------------|---------------------------|---------------------------|---------------------------|-------------------------|--------------------------|---------------------------|---------------------------|---------------------------|--------|
| | Under five years of Age | From 5 years to 10 years | From 10 years to 15 years | From 15 years to 20 years | From 20 years to 25 years | Under five years of Age | From 5 years to 10 years | From 10 years to 15 years | From 15 years to 20 years | From 20 years to 25 years | |
| Jefferson | 1937 | 758 | 749 | 731 | 417 | 1708 | 719 | 718 | 606 | 538 | 35 |
| Washington | 1035 | 379 | 568 | 642 | 292 | 991 | 328 | 472 | 507 | 193 | 18 |
| Adams | 727 | 273 | 219 | 241 | 177 | 664 | 261 | 267 | 273 | 115 | 15 |
| Hamilton | 3273 | 1335 | 1502 | 1251 | 480 | 3090 | 1105 | 1297 | 954 | 544 | 0 |
| Wayne | 540 | 201 | 332 | 584 | 198 | 467 | 193 | 352 | 198 | 100 | 139 |
| Rock | 1648 | 630 | 928 | 1061 | 336 | 1413 | 604 | 760 | 698 | 292 | 125 |
| Summit | 202 | 71 | 228 | 223 | 75 | 206 | 83 | 93 | 106 | 21 | 5 |
| The aggregate amount of each description. | 9362 | 3647 | 4036 | 4833 | 1985 | 8644 | 3353 | 3861 | 3342 | 1393 | 327 |
| <i>The whole number of Inhabitants in the Territory 45,365.</i> | | | | | | | | | | | |

Historic census records are maintained and released by the National Archives and Records Administration, not the U.S. Census Bureau. Visit <http://www.archives.gov> for more information about publicly available records like the one shown here.

Why We Ask You to Allocate Resources to the 2020 Census

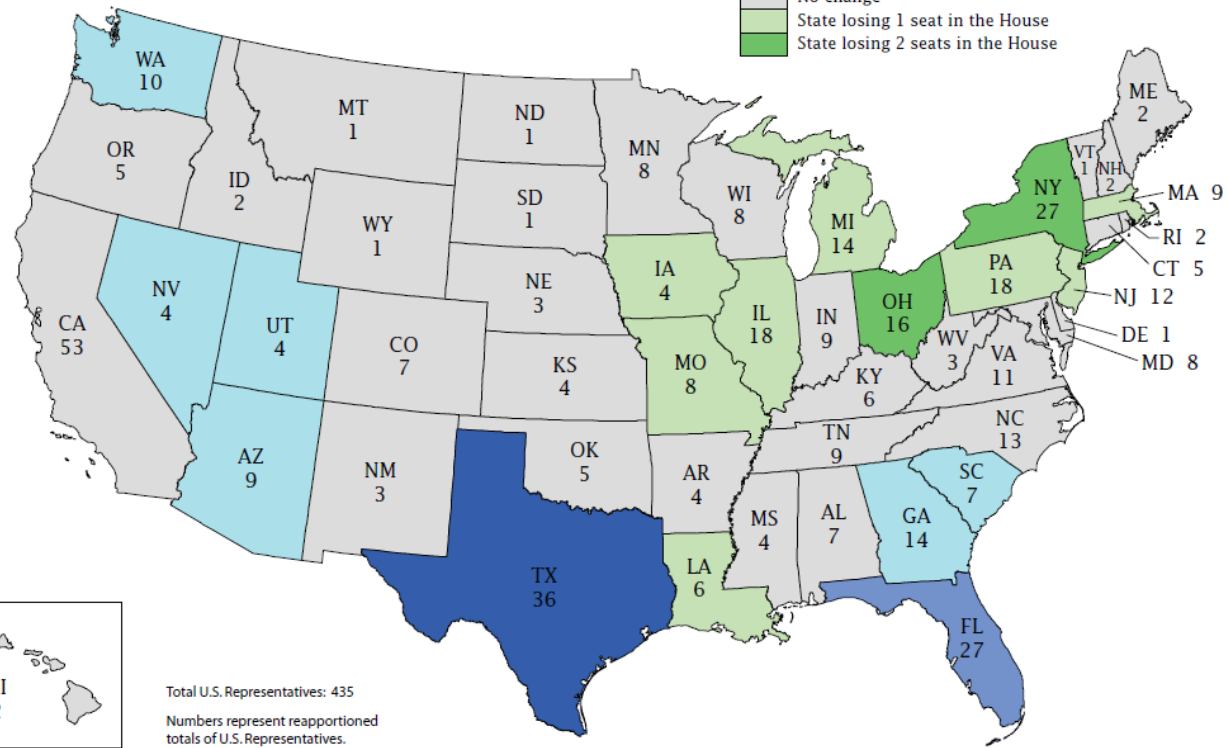
- Political Power
 - Census is constitutionally mandated for re-apportionment of Congress
 - Census results are used for Redistricting at national, state, and local levels.
- Money/Economic Impact
 - Over \$675 Billion/year is distributed to state and local governments using Census numbers (Over \$4 Trillion over the decade).

Apportionment of the U.S. House of Representatives Based on the 2010 Census



Change from 2000 to 2010

- State gaining 4 seats in the House
- State gaining 2 seats in the House
- State gaining 1 seat in the House
- No change
- State losing 1 seat in the House
- State losing 2 seats in the House



Total U.S. Representatives: 435
Numbers represent reapportioned totals of U.S. Representatives.

U.S. Department of Commerce

USCENSUSBUREAU
Helping You Make Informed Decisions

Upper Coastal Plain COG and North Carolina 2000 & 2010 Census Participation Rates

| | <u>2000</u> | <u>2010</u> |
|---------------|-------------|-------------|
| • NC | 69% | 76% |
| • Edgecombe | 62% | 75% |
| • Halifax | 63% | 75% |
| • Nash | 69% | 77% |
| • Northampton | 60% | 69% |
| • Wilson | 69% | 75% |

Target Populations

- Children 5yrs and under
- Veterans
- People with disabilities
- Homeless
- People living in rural America
- Low income and underserved

- Senior citizens
- Migrant farm workers
- Foreign Born - Immigrants
- Persons with limited English proficiency
- Renters



Census Data Are Used In Many Ways

- Forecasting of future transportation needs
- Determining areas eligible for housing assistance and rehabilitation loans
- Assisting tribal, federal, state and local governments in planning, and implementing programs and services in:
 - Education
 - Healthcare
 - Transportation
 - Social Services
 - Emergency response
- Designing facilities for people with disabilities, the elderly and children

Privacy and Confidentiality

- Under Title 13, U.S. Code, all Census Bureau employees swear a lifetime oath to protect respondent data. It is a felony for any Census Bureau employee to disclose any confidential census information during or after employment, and the penalty for wrongful disclosure is up to 5 years imprisonment and/or a fine of \$250,000.
- We protect information by taking precautions in how we collect, analyze and disseminate information. The Census Bureau has strong program to protect information as they collect, process and store it in secure IT systems.
- The Census Bureau encrypts information, limits access, and actively monitors systems to make sure information stays secure.



It is
important to
note that the
Census
Bureau:

never asks for your full Social Security number;

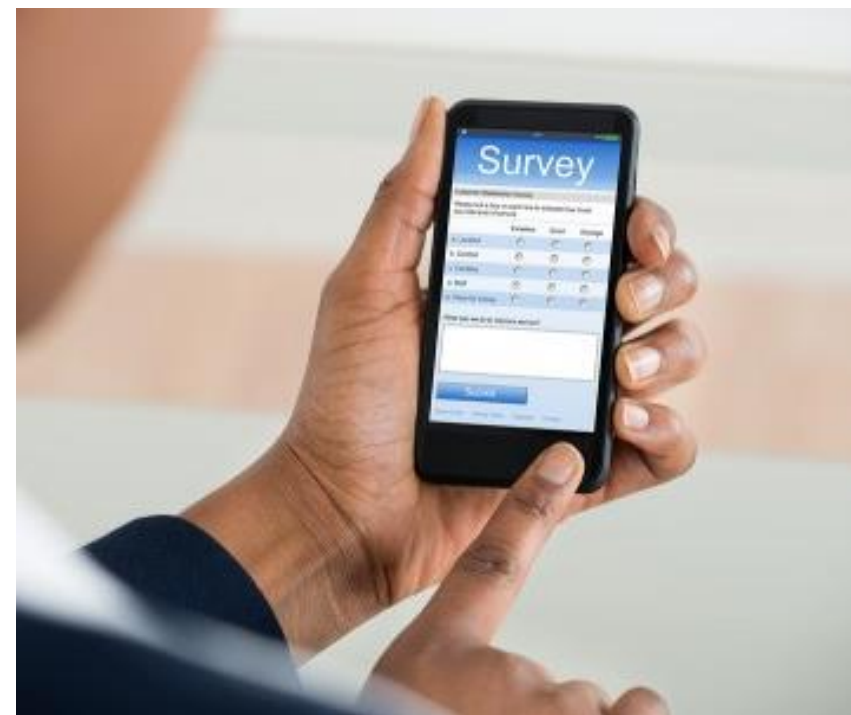
never asks for money or a donation;

never sends requests on behalf of a political party;

never requests PIN codes, passwords or similar access information for credit cards, banks or other financial accounts.

New Initiatives for Census 2020

- Allowing people to respond anytime, anywhere, via **phone or internet**. Tests have shown internet self-response is the most cost effective and accurate way. Those that request a form can complete the Census using the form.
- The Census Bureau is eliminating paper and incorporating the use of handheld data collection devices.



Do You know that the Census Bureau Collects a Wide Variety of Data Every Month?

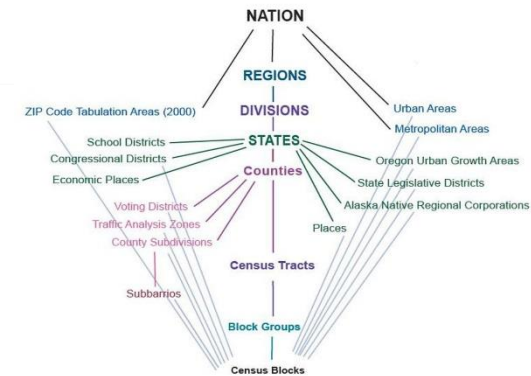


Demographics:
Age
Sex
Marital
Education
Housing
Health Ins and more



Business and
Industry Data
Import/Exports
Employment
Government Data

Standard Hierarchy of Census Geographic Entities



Data at a variety of
Geographic Levels:
National, State, County
City/Place
Tract
Block
Congressional Districts

Complete Count Committees

- Ultimately, the success of the 2020 Census depends on everyone's participation. One way to ensure success is by forming a Complete Count Committee.
- State and local governments, businesses and community leaders form Complete Count Committees to encourage participation in their community. They develop an outreach plan tailored to the unique characteristics of their community. Then they work together to implement the plan.

Complete Count Committees

- Complete Count Committees conduct a wide range of possible activities. For example, they host promotional events, display census information in government buildings, include census messages on customer billing statements or other correspondence, and they network with community leaders to ensure everyone is involved.
- Opportunity to “tailor” the Census outreach and messaging to most effectively influence local communities.
- Involve all constituent groups, and use “trusted voices” of community leaders to encourage self-response.



Get Organized Right NOW!

- Households will begin to experience, by the end of 2018, some type of census operation such as address listing. These necessary operations verify the accuracy and location of each address.
- The immediate formulation of a CCC will ensure that local households are kept abreast of the various census operations before the information is nationally circulated.
- The more informed households are about the 2020 Census operations, the better their understanding of the census process becomes, thus increasing their willingness to be a part of the successful enumeration in 2020.

What is the Structure of a CCC?

Highest elected officials or community leaders appoint chairpersons



The Chairperson is the liaison or main source of contact between the CCC and the Census Bureau

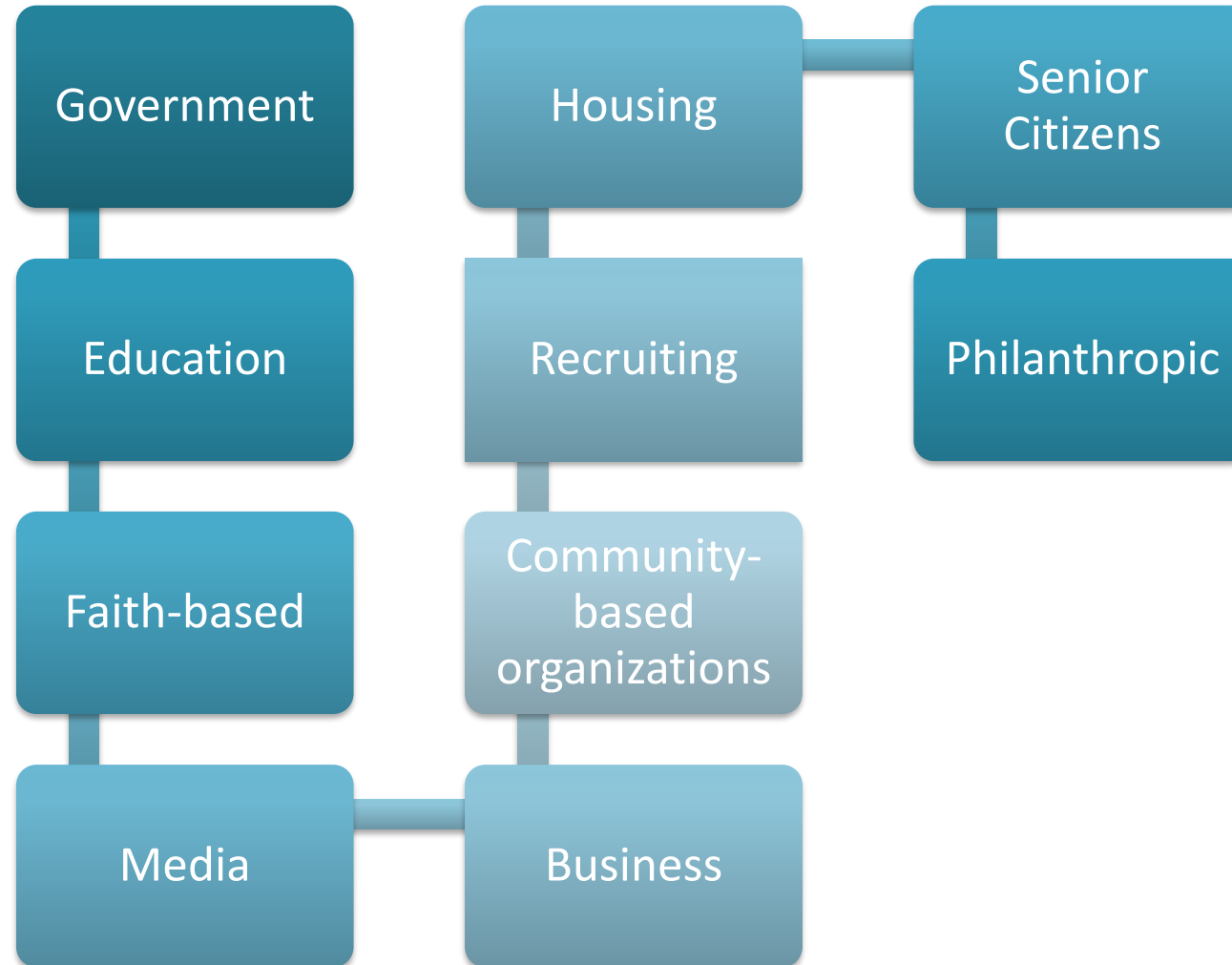


The chairperson collaborates with the highest elected official or community leader to select subcommittees and chairs of the subcommittees

CCC Chairs and Subcommittee Chairs

- Choose a CCC committee chairperson who is committed, knowledgeable, and active in the community
- Select subcommittee chairpersons who are purpose-driven, result oriented, and get results
- Customize and design the committee to reflect a true snapshot of the community
- Include diverse perspectives to achieve objectives. Assess which groups—locally and nationally—are able to provide support and assistance
- Include Trusted Voices

Subcommittee Examples



Local Government CCC's

Local government CCC's should include members with experience in the following areas:

- Government
- Education
- Media
- Minority Organizations
- Community organizations
- Workforce developments
- Faith-based institutions
- Businesses



Community-based CCC's

The Census Bureau encourages community leaders in hard-to-count areas to form CCC's and include trusted voices from the community.

Hard-to-count areas may, for example, have:

- Hidden or overcrowded housing
- Populations that speak little or no English
- Off-campus apartments
- New immigrant populations
- High poverty areas
- People displaced by natural disasters such as floods, fires, and hurricanes



Subcommittee Worksheet

Take a moment to brainstorm

- Think about trusted voices
- Think about organizations that have an impact and serve
- Think about areas that may be hard to count and identify leaders or trusted voices in those communities



How the Census Bureau Will Support You

- We will provide staff from our regional offices to work directly with each Complete Count Committee.
- We will provide information, assist you in forming committees and subcommittees, and participate in local events and activities.
- We plan to provide a guide for 2020 Census Complete Count Committees, but you can begin now. In the meantime, you can refer to a Complete Count Committee [guide](#) and [other information available online](#) from the 2010 Census for historical reference. Keep a big change in mind though: we'll primarily ask people to respond to the 2020 Census online (not by mail).
- As the 2020 Census gets closer, the Census Bureau will also launch a robust communications campaign. We'll use advertisements, conduct outreach. You can leverage our efforts in your own community through your Complete Count Committee.



Prepare for 2020 Census, Now!

- Create or join a Complete Count Committee and partner with other trusted voices and influential leaders in your area who are committed to increasing census participation. Encourage your peers to get involved too. **Call the Atlanta Regional Office to schedule a CCC Workshop.**
- Raise awareness by including census information in newsletters, social media posts, podcasts, mailings, and on Web sites.
- Help recruit census workers when jobs become available.



2020census.gov/jobs

1-855-JOB-2020
(1-855-562-2020)

Federal Relay Service: (800) 877-8339 TTY / ASCII
www.gsa.gov/fedrelay

The Federal Relay Service (FedRelay) provides telecommunications services to allow individuals who are deaf, hard of hearing, and/or have speech disabilities to conduct official business with and within the federal government.

The U.S. Census Bureau is an Equal Opportunity Employer.

WHO DO WE NEED?

Administrative Manager (AM)

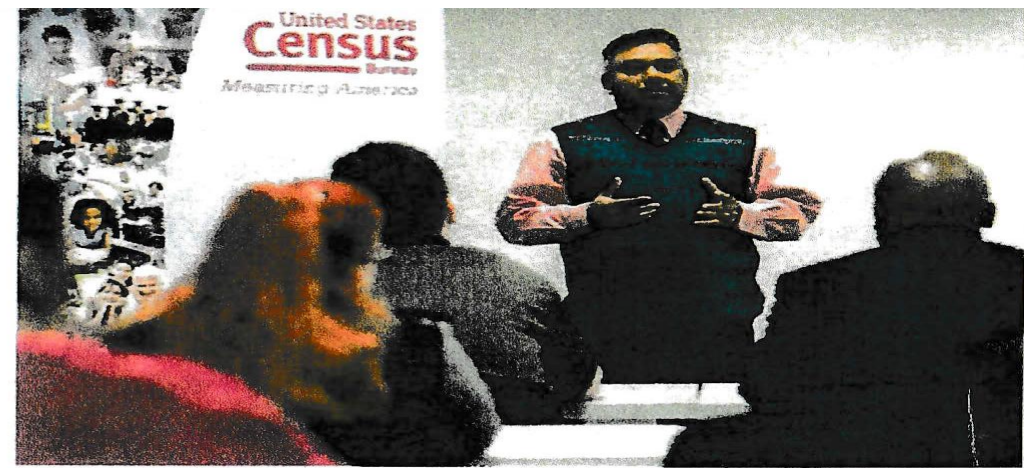
The AM is responsible for office administrative activities, including personnel and payroll operations for the assigned office. AMs are responsible for administrative support of all staff. Specifically, the AM is responsible for processing applications for thousands of applicants, managing applicant selection (telephone interviewing and making job offers), processing personnel actions for several hundred or more hires, and processing payroll for several hundred or more employees a week, at peak.

Area Census Office Manager (ACOM)

The ACOM leads a team of census managers assigned to the Area Census Office (ACO). ACOMs are responsible for ensuring that 2020 Census field and office operations are completed within budget, on schedule, and meet quality standards. The ACO management team will be responsible for recruiting office and field staff, managing personnel payroll activities, and technology functions. Additionally, the ACOM supervises and manages hundreds of field staff involved in updating address lists, conducting interviews, and performing other follow-up activities.

Census Field Manager (CFM)

The CFM manages various field data collection activities. Specifically, the CFM is responsible for training, supervising, and managing several hundred field staff involved in activities such as updating address lists and maps, conducting in-person interviews, and performing other follow-up activities. Additionally, the CFM will train, supervise, and manage office staff.



IT Manager (IT)

The IT Manager is responsible for managing technology used by hundreds of field staff and dozens of office staff. Specifically, the IT Manager is responsible for troubleshooting, evaluating, analyzing, and coordinating automation operations, supporting both office and field activities (including support of mobile devices used by field staff). Additionally, the IT Manager will train and supervise office staff to assist in the IT support function.

Recruiting Manager (RM)

The RM is responsible for ensuring that qualified applicants are recruited to fill field and office positions. The RM is responsible for the development of an ACO recruiting plan that will provide guidance to the office in the recruitment of thousands of applicants. The RM is also responsible for recruiting, training, and managing recruiting support staff, including dozens of field recruiting assistants and office support staff. The recruiting assistants will work at the grass roots level to get the word out about jobs.

Sources for Job Information

USAJOBS.GOV

USAJOBS

Keywords: Job title, dept., agency, series, or occupation

Location: City, state, zip, or country

SHAPE AMERICA'S FUTURE
Find your fit in the Federal Government

Create Profile

Create a USAJOBS Profile | Federal Application Process | Explore Opportunities

Create a USAJOBS Profile

- Save your favorite jobs and searches**
Receive email updates from jobs you're interested in.
- Upload your resumes and documents**
Save and manage resumes and documents for your application.
- Make your resume searchable**
Your resume will be visible to recruiters searching our database.
- Apply for jobs in the Federal Government**
You can only apply online with a complete USAJOBS profile.

Create Profile or Sign In

Regional Offices & National Processing Center

<https://census.gov/about/regions/atlanta.html>

Census.gov | About the Bureau | Regional Offices

About the Bureau

Who We Are
What We Do
Business Opportunities
Census Careers
Advisors, Centers and Research Programs
Congressional & Intergovernmental Affairs
History
Our Research
Our Surveys & Programs
Plans & Budget
Policies and Notices

Regional Offices

- Atlanta Region
- Chicago Region
- Denver Region
- Los Angeles Region
- New York Region
- Philadelphia Region

National Processing Center (NPC)
Contact Us

Regional Offices

Tweet | Share

Select a state from the drop down list to locate the regional office servicing that area.

Select a Geography

Quickly Locate Contact Information for each Region

Expand All

- Atlanta Region Contacts
- Chicago Region Contacts
- Denver Region Contacts
- Los Angeles Region Contacts
- New York Region Contacts
- Philadelphia Region Contacts

Related Information

National Processing Center (NPC)

Click on Employment Opportunities



Atlanta Region

About this Region
Employment Opportunities
Outreach & Partners
Services
Surveys/Programs
Contact Us

The Atlanta Regional Office is responsible for all data collection, data dissemination, and geographic operations under the current service area boundaries.

Read More...

All Regional Offices

ID Field Representatives

Employment Opportunities

Latest

News | Employment | Resources

Next Steps

- Continue to finalize your list of CCC members
- Inform the Census Bureau Partnership staff of the selected Chairperson, Committee members, Subcommittee chairpersons and members
- Schedule a Census workshop on CCC Workplans and Strategies.





Contact Information:

- Atlanta Partnership Staff (470) 889-6530
atlanta.rcc.partnership@census.gov
- Atlanta Recruiting 1-855-889-8932
atlanta.rcc.recruiting@census.gov
- Wilhelmenia I. Rembert, Ph.D. (678) 938-9155
Partnership Specialist
wilhelmenia.rembert@2020census.gov
- DeMorrio U. Thomas (678) 641-9782
Partnership Specialist (North Carolina)
DeMorrio.U.Thomas@2020census.gov